

GARDEN COMPLEX





GARDEN COMPLEX

SADRŽAJ

04	O PROJEKTU
06	ŠIRA SITUACIJA
08	UŽA SITUACIJA
10	VIZUELIZACIJA EKSTERIJERA
32	TIPOLOGIJA STAMBENIH JEDINICA



GARDEN COMPLEX

O PROJEKTU

Garden Complex se nalazi u naselju Zabjelo, u neposrednoj blizini bivšeg industrijskog postrojenja Titex.

lokacija kompleksa: UP 191 (k.p. 3586/1), UP 192 (k.p. 3586/2),
UP 193 (k.p. 3586/3), UP 194 (k.p. 3586/4)
u okviru DUP-a TITEX, Opština Podgorica

SPRATNOST

ZGRADA 1: P+2+T
ZGRADA 2: G+P+2+T
ZGRADA 3: G+P+2+T
ZGRADA 4: P+2+T

UKUPNA BRGP

ZGRADA 1: 2 018,60 m²
ZGRADA 2: 2 052,60 m²
ZGRADA 3: 2 052,60 m²
ZGRADA 4: 2 052,60 m²

BROJ STANOVA

ZGRADA 1: 34
ZGRADA 2: 36
ZGRADA 3: 36
ZGRADA 4: 36



GARDEN COMPLEX

ŠIRA SITUACIJA





GARDEN COMPLEX

UŽA SITUACIJA

FAZA 4

ZGRADA 4

FAZA 3

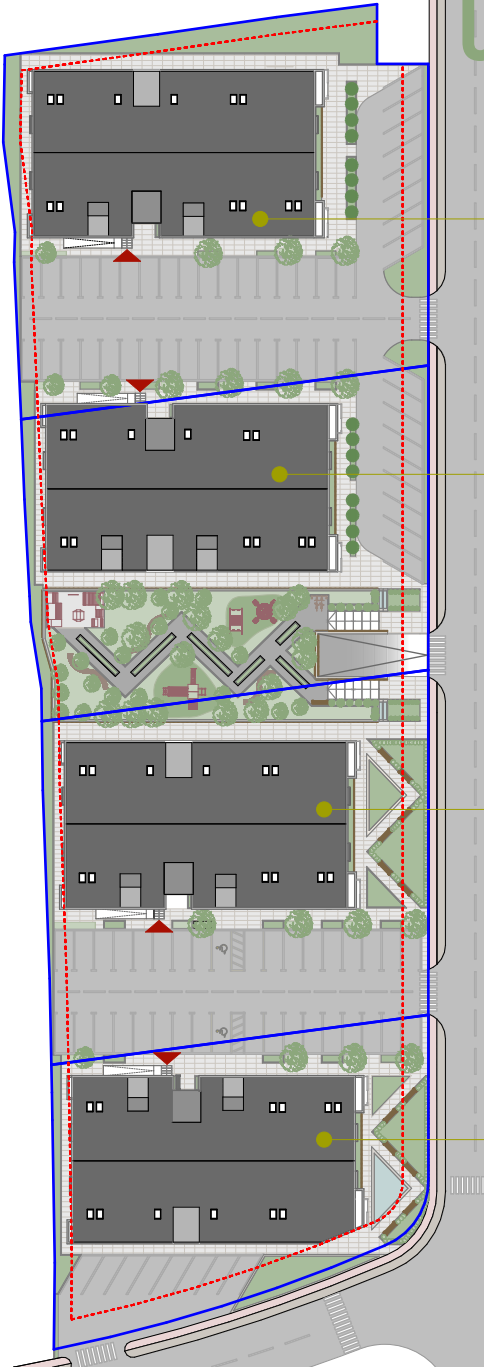
ZGRADA 3

FAZA 2

ZGRADA 2

FAZA 1

ZGRADA 1

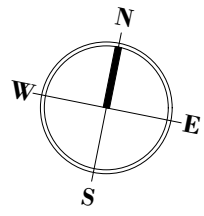


100

50

10

0





GARDEN COMPLEX

VIZUELIZACIJE EKSTERIJERA



GARDEN COMPLEX





GARDEN COMPLEX





GARDEN COMPLEX





GARDEN COMPLEX





GARDEN COMPLEX





GARDEN COMPLEX





GARDEN COMPLEX





GARDEN COMPLEX





GARDEN COMPLEX





GARDEN COMPLEX



TIPOLOGIJA STAMBENIH JEDINICA

TIPSKJE JEDINICE

Stambene zgrade su podijeljene na faze. Tipologija stanova nastala je u zavisnosti od kvadrature i pozicije u okviru sve 4 zgrade.

Razlikuje se više stambenih jedinica, i to:

- 6 garsonjera
- 15 jednosobnih stanova
- 4 dvosobna stana.

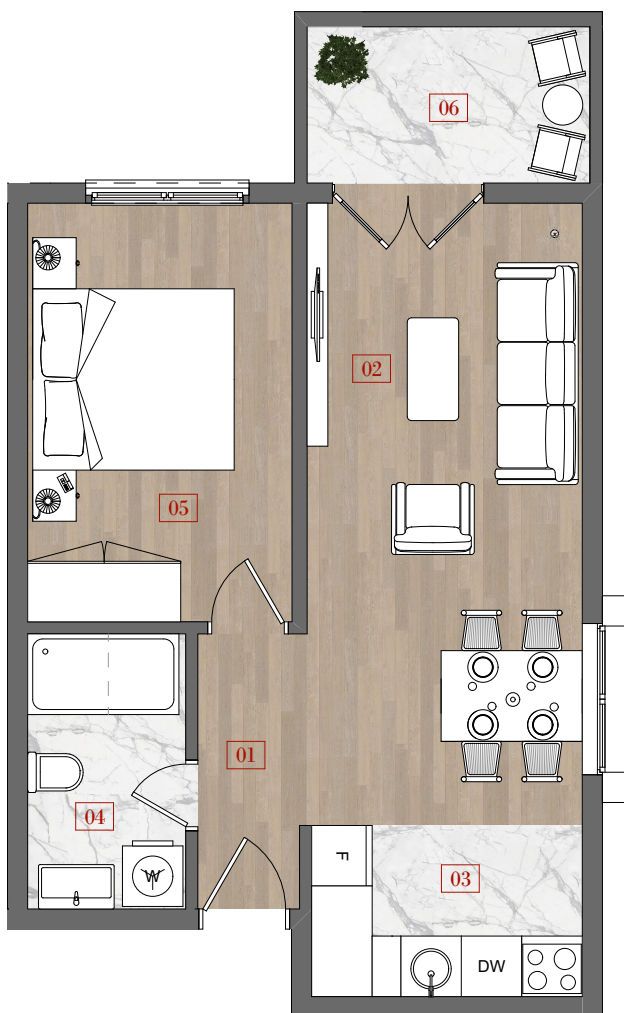
U sklopu Zgrade 1 (na prizemlju) nalazi se poslovni prostor.

U cijelom kompleksu postoji 118 parking mjesta, od kojih su 95 nadzemnih i 23 garažnih mjesta.

ZGRADA 1

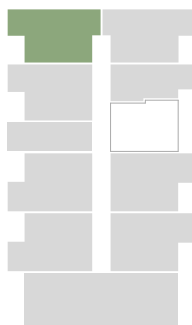
STAMBENA JEDINICA (Pr-J7)

Jednosoban stan ___ 43,8 m²

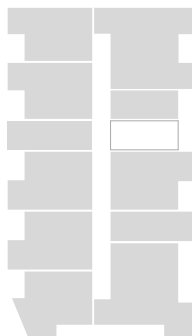


01. HODNIK	2,86 M ²
02. DNEVNA SOBA I TRPEZARIJA	16,97 M ²
03. KUHINJA	4,55 M ²
04. KUPATILO	4,28 M ²
05. SPAVAĆA SOBA	10,80 M ²
06. TERASA	4,35 M ²

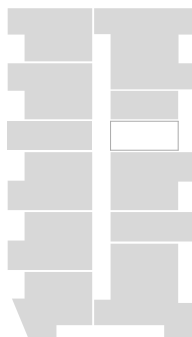
PRIZEMLJE



1. SPRAT



2. SPRAT

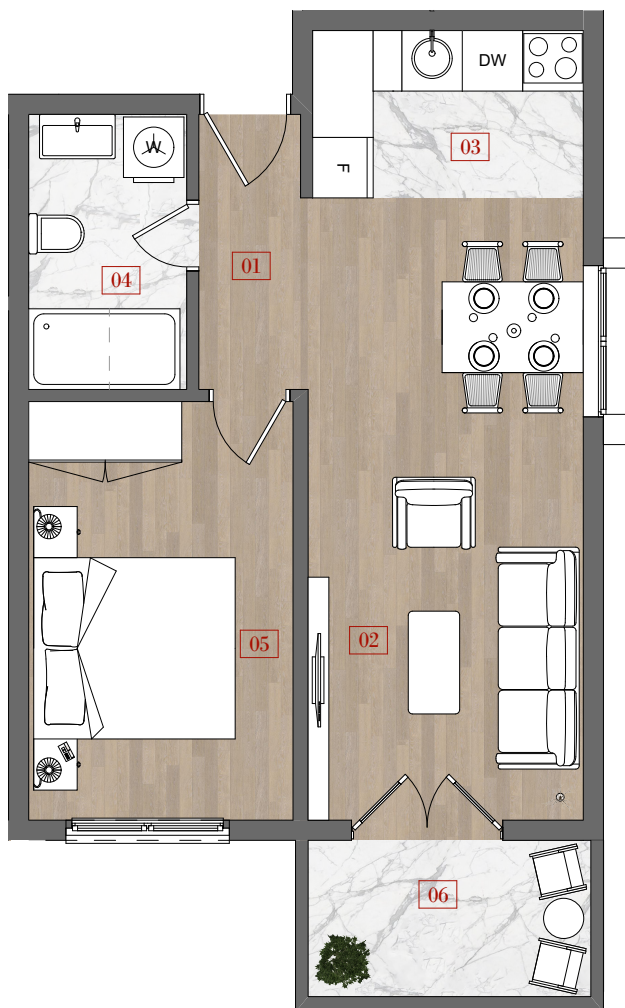


TAVAN



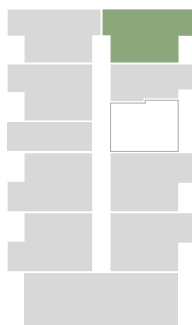
STAMBENA JEDINICA (Pr-J6)

Jednosoban stan ___ 43,7 m²

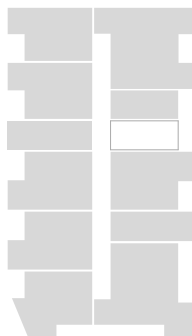


01. HODNIK	2,90 M ²
02. DNEVNA SOBA I TRPEZARIJA	16,84 M ²
03. KUHINJA	4,45 M ²
04. KUPATILO	4,28 M ²
05. SPAVAĆA SOBA	10,88 M ²
06. TERASA	4,35 M ²

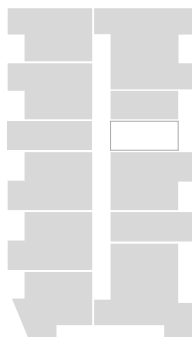
PRIZEMLJE



1. SPRAT



2. SPRAT

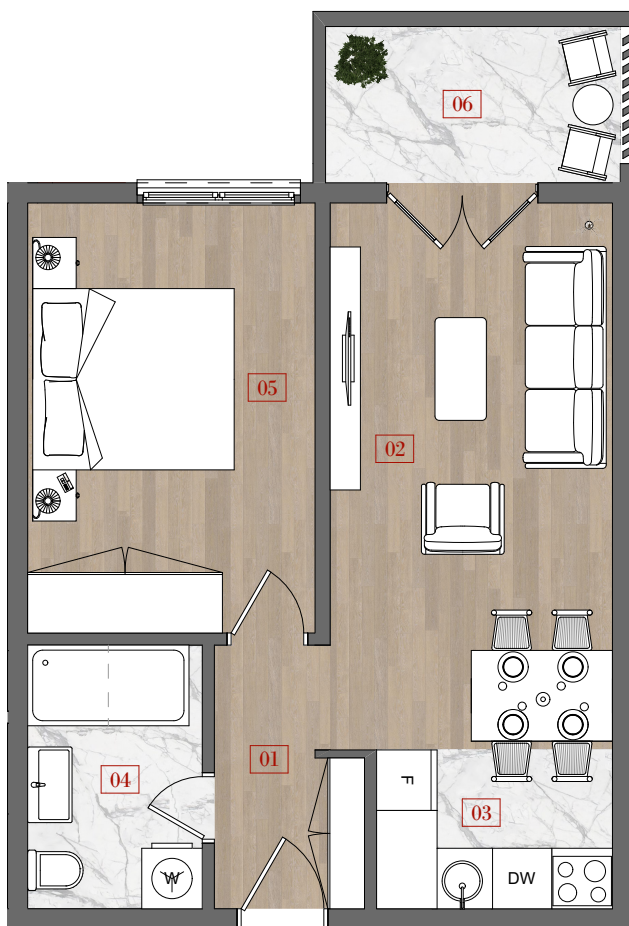


TAVAN



STAMBENA JEDINICA (Pr-J5, 1-J5, 2-JP)

Jednosoban stan ___ 43,5 m²

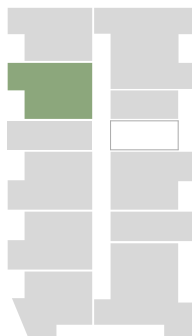


01. HODNIK	3,34 M ²
02. DNEVNA SOBA I TRPEZARIJA	15,19 M ²
03. KUHINJA	3,68 M ²
04. KUPATILO	4,53 M ²
05. SPAVAĆA SOBA	12,16 M ²
06. TERASA	4,57 M ²

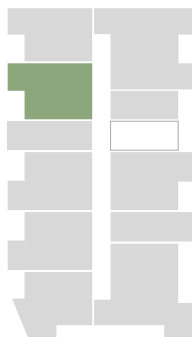
PRIZEMLJE



1. SPRAT



2. SPRAT

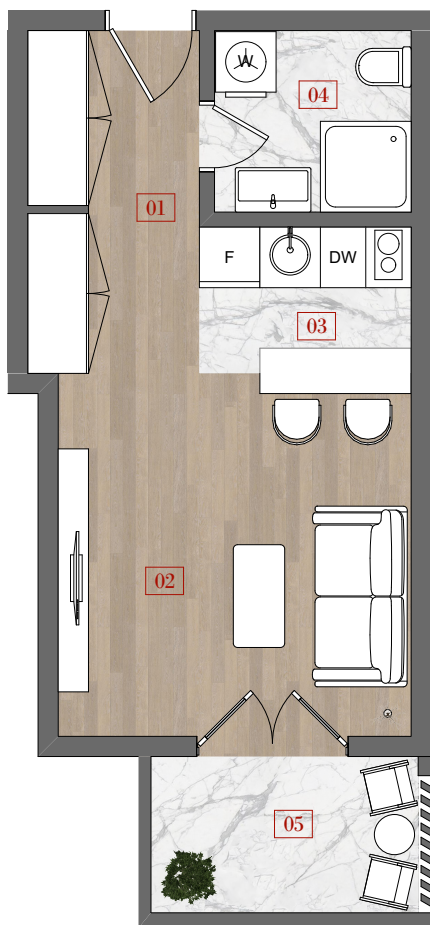


TAVAN



STAMBENA JEDINICA (Pr-G2)

Garsonjera ___ 29,1 m²

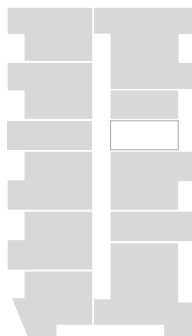


01. HODNIK	2,95 M ²
02. DNEVNA SOBA I TRPEZARIJA	15,91 M ²
03. KUHINJA	2,52 M ²
04. KUPATILO	3,52 M ²
05. TERASA	4,16 M ²

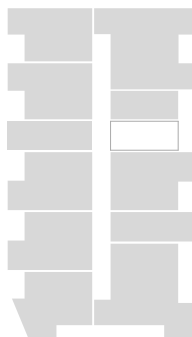
PRIZEMLJE



1. SPRAT



2. SPRAT

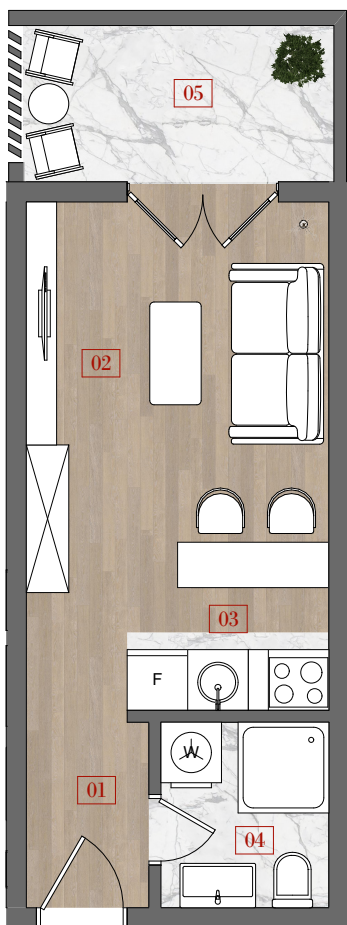


TAVAN



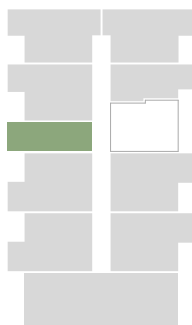
STAMBENA JEDINICA (Pr-G1, 1-G2, 2-G2)

Garsonjera ___ 25,4 m²

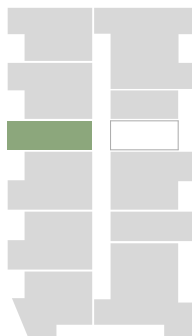


01. HODNIK	2,38 M ²
02. DNEVNA SOBA I TRPEZARIJA	12,69 M ²
03. KUHINJA	2,43 M ²
04. KUPATILO	3,06 M ²
05. TERASA	4,81 M ²

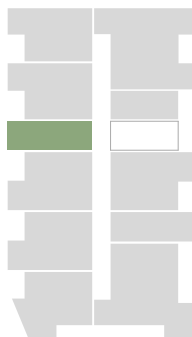
PRIZEMLJE



1. SPRAT



2. SPRAT

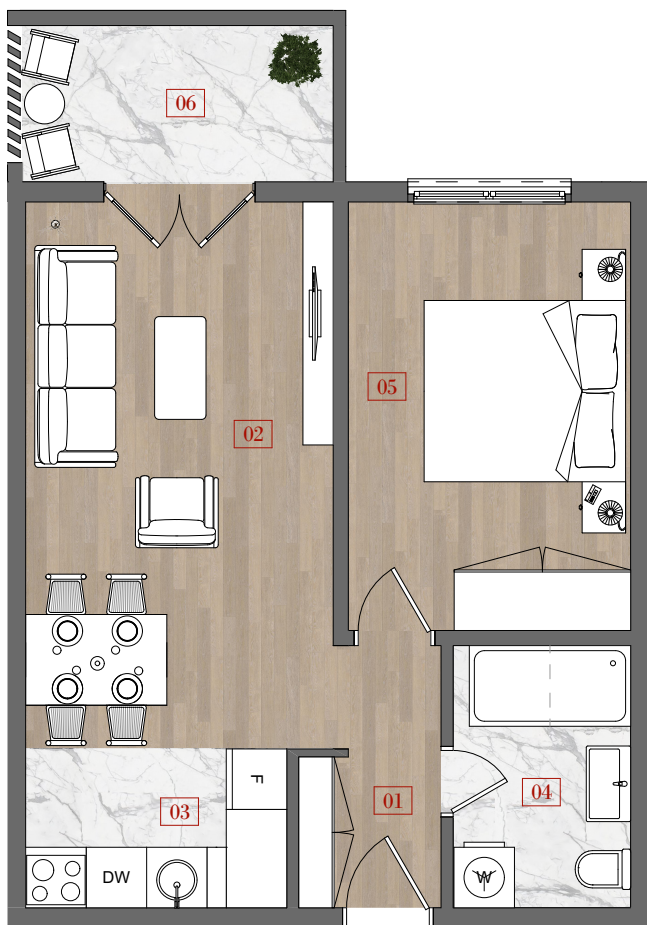


TAVAN



STAMBENA JEDINICA (Pr-J4, 1-J4, 2-J4)

Jednosoban stan ___ 45,0 m²

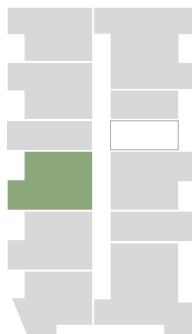


01. HODNIK	3,14 M ²
02. DNEVNA SOBA I TRPEZARIJA	16,55 M ²
03. KUHINJA	4,08 M ²
04. KUPATILO	4,60 M ²
05. SPAVAĆA SOBA	11,94 M ²
06. TERASA	4,81 M ²

PRIZEMLJE



1. SPRAT



2. SPRAT

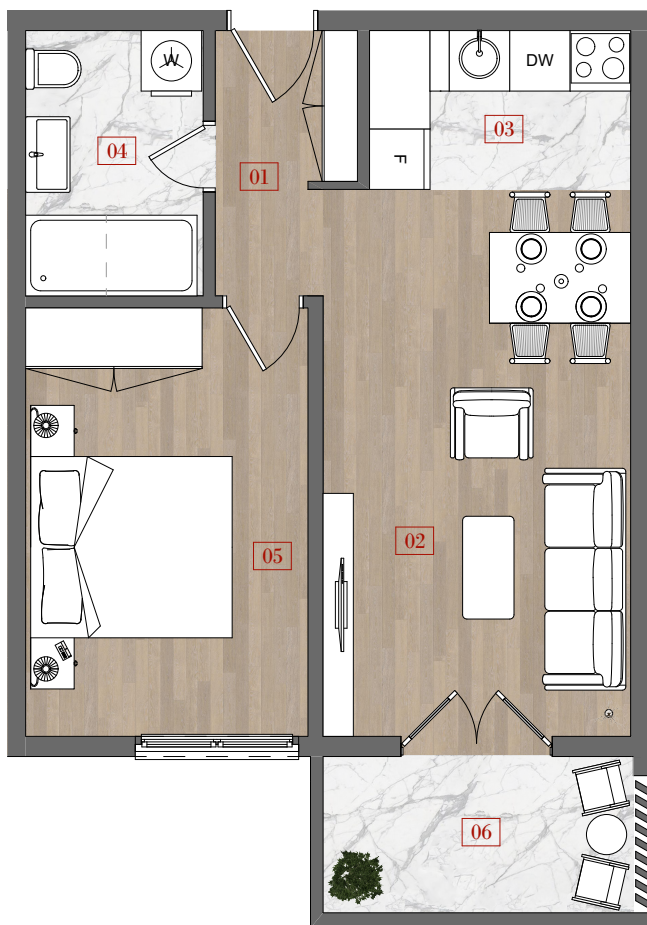


TAVAN



STAMBENA JEDINICA (Pr-J3, 1-J3, 2-J3)

Jednosoban stan ___ 45,1 m²



01. HODNIK	3,16 M ²
02. DNEVNA SOBA I TRPEZARIJA	16,55 M ²
03. KUHINJA	4,08 M ²
04. KUPATILO	4,63 M ²
05. SPAVAĆA SOBA	11,90 M ²
06. TERASA	4,81 M ²

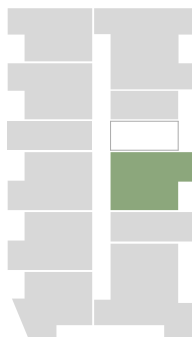
PRIZEMLJE



1. SPRAT



2. SPRAT

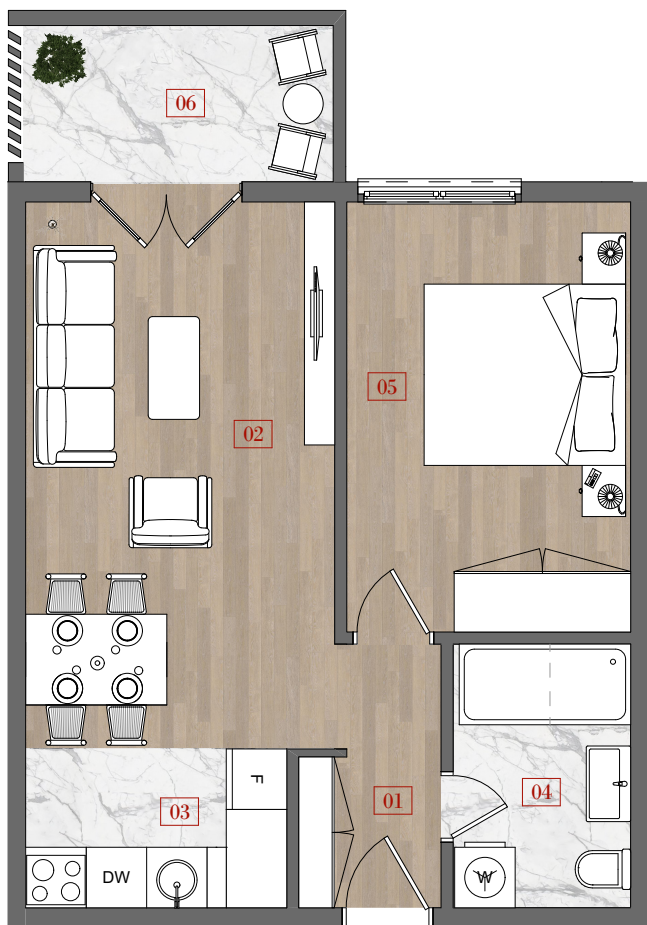


TAVAN



STAMBENA JEDINICA (Pr-J2, 1-J2, 2-J2)

Jednosoban stan ___ 45,3 m²



01. HODNIK	3,16 M ²
02. DNEVNA SOBA I TRPEZARIJA	16,63 M ²
03. KUHINJA	4,08 M ²
04. KUPATILO	4,60 M ²
05. SPAVAĆA SOBA	12,01 M ²
06. TERASA	4,81 M ²

PRIZEMLJE



1. SPRAT



2. SPRAT

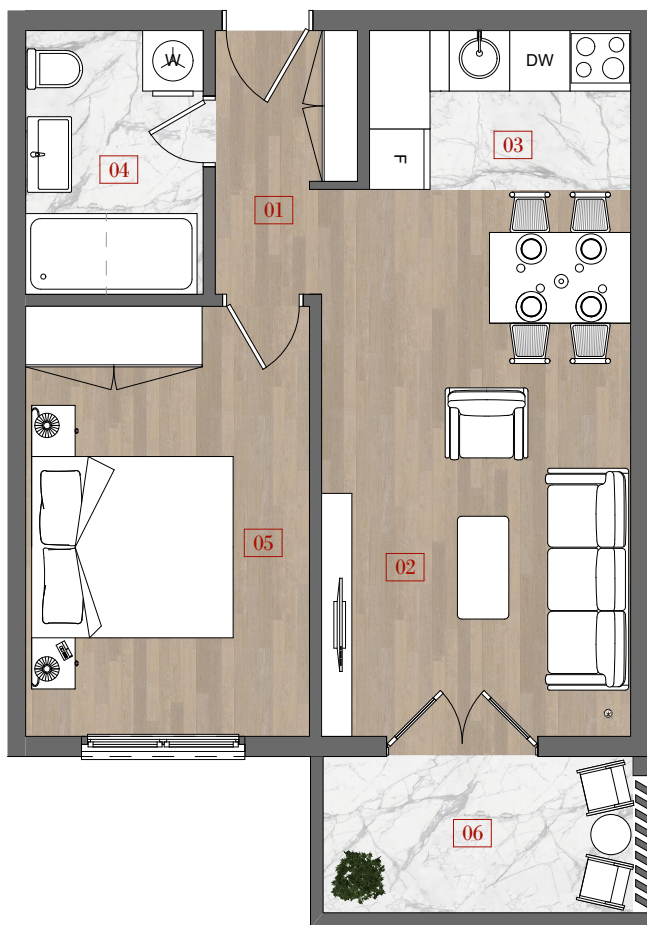


TAVAN



STAMBENA JEDINICA (Pr-JI)

Jednosoban stan ___ 45,3 m²

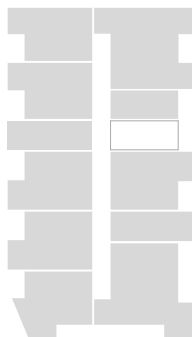


01. HODNIK	3,16 M ²
02. DNEVNA SOBA I TRPEZARIJA	16,63 M ²
03. KUHINJA	4,08 M ²
04. KUPATILO	4,60 M ²
05. SPAVAĆA SOBA	12,01 M ²
06. TERASA	4,81 M ²

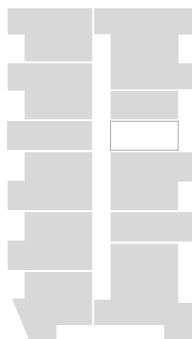
PRIZEMLJE



1. SPRAT



2. SPRAT

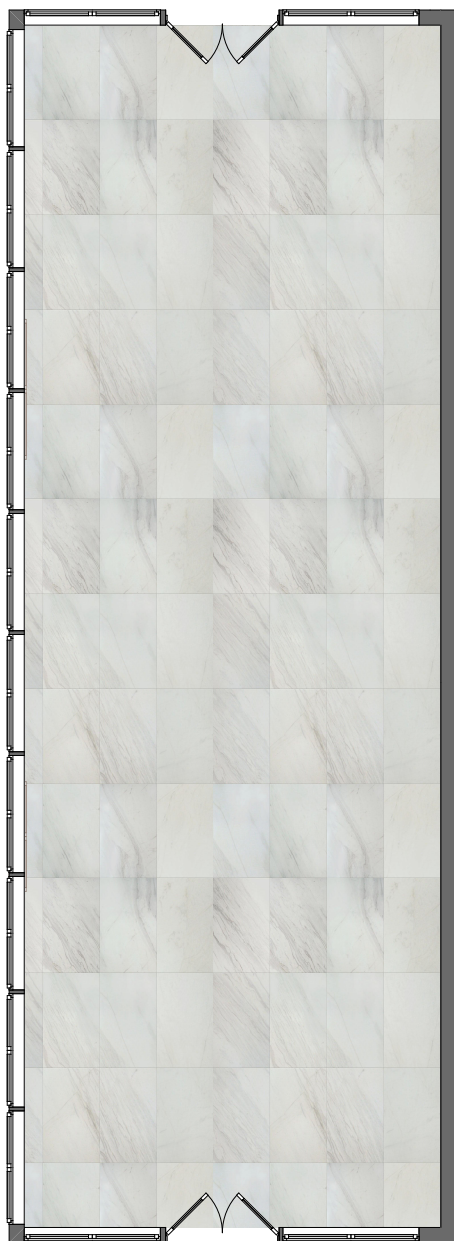


TAVAN

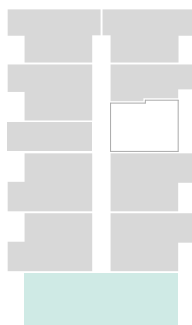


POSLOVNI PROSTOR

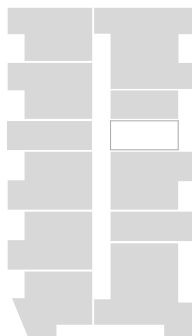
87,61 m²



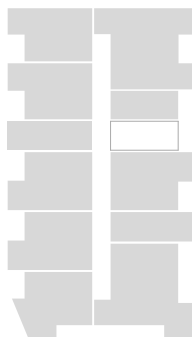
PRIZEMLJE



1. SPRAT



2. SPRAT

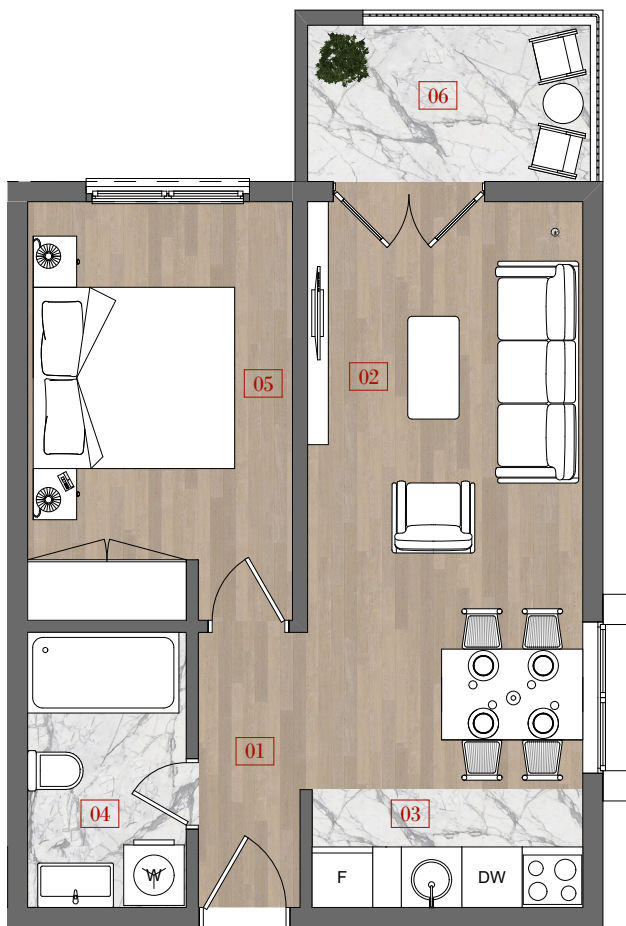


TAVAN



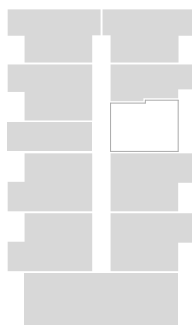
STAMBENA JEDINICA (1-J6, 2-J6)

Jednosoban stan ___ 41,50 m²

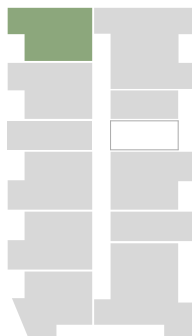


01. HODNIK	2,90 M ²
02. DNEVNA SOBA I TRPEZARIJA	16,90 M ²
03. KUHINJA	2,23 M ²
04. KUPATILO	4,29 M ²
05. SPAVAĆA SOBA	10,83 M ²
06. TERASA	4,35 M ²

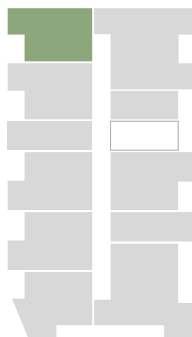
PRIZEMLJE



1. SPRAT



2. SPRAT

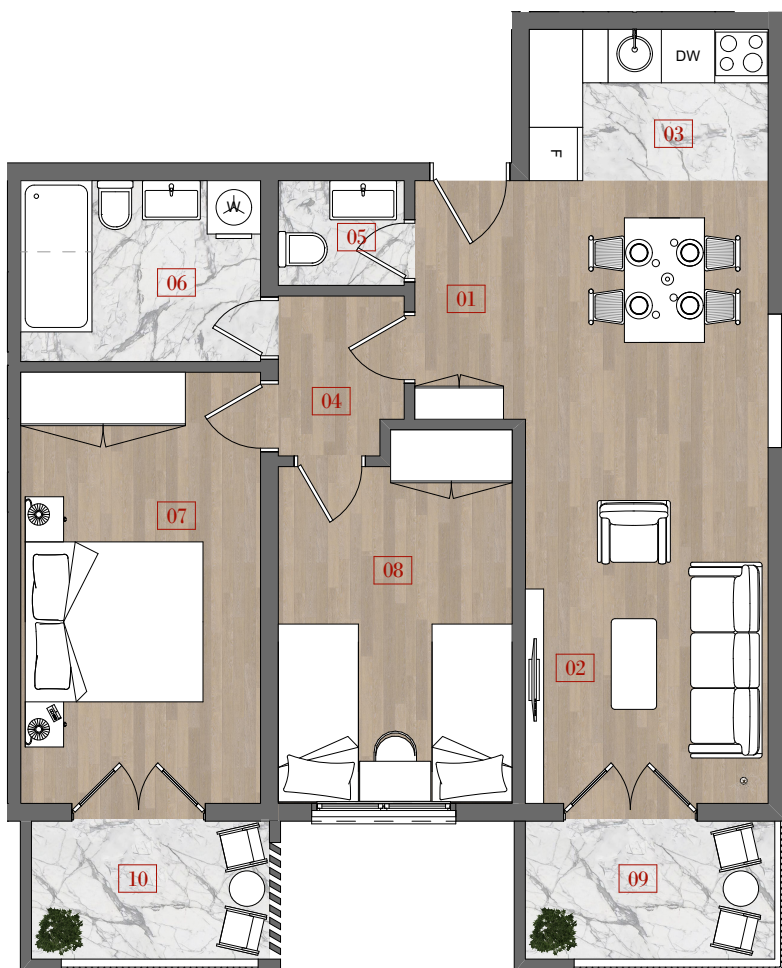


TAVAN



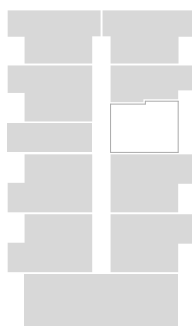
STAMBENA JEDINICA (1-D2, 2-D2)

Dvosoban stan ___ 68,80 m²

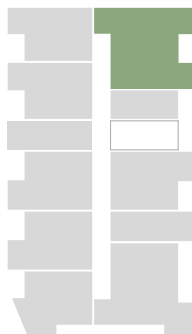


01. HODNIK	3,33 M ²
02. DNEVNA SOBA I TRPEZARIJA	19,61 M ²
03. KUHINJA	4,58 M ²
04. DEGAŽMAN	2,43 M ²
05. TOALET	1,67 M ²
06. KUPATILO	5,48 M ²
07. SPAVAČA SOBA	13,16 M ²
08. SPAVAČA SOBA	10,51 M ²
09. TERASA	4,35 M ²
10. TERASA	4,16 M ²

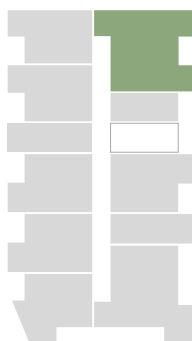
PRIZEMLJE



1. SPRAT



2. SPRAT

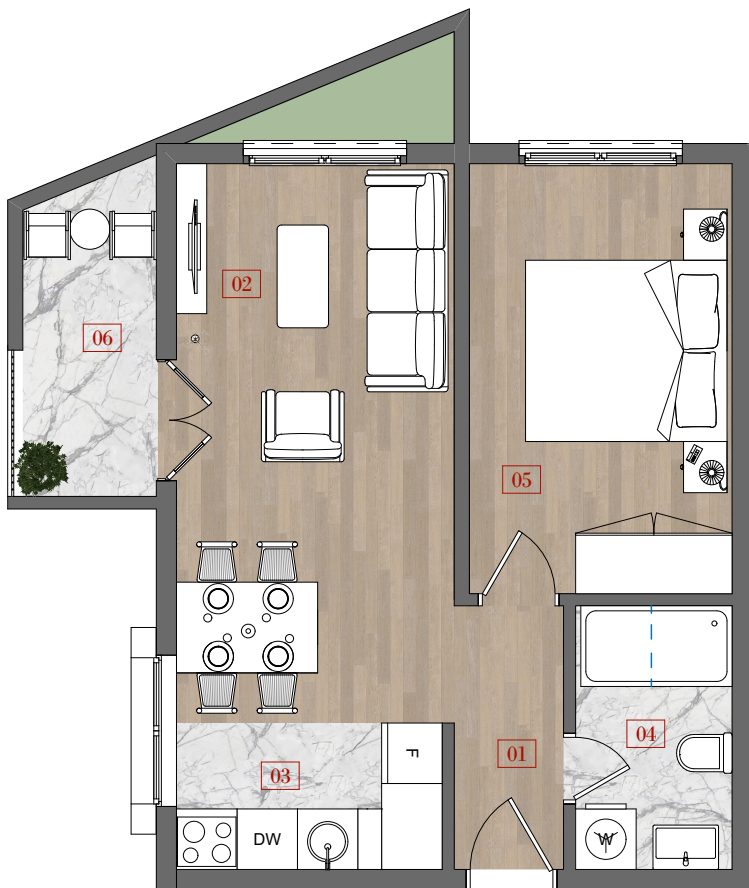


TAVAN



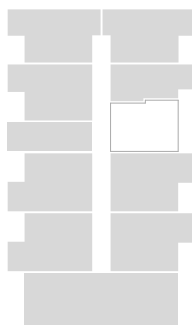
STAMBENA JEDINICA^(1-J1, 2-J1)

Jednosoban stan ___ 41,20 m²

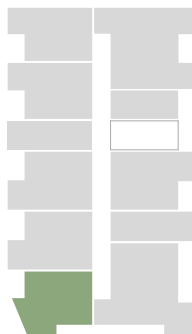


01. HODNIK	2,83 M ²
02. DNEVNA SOBA I TRPEZARIJA	15,28 M ²
03. KUHINJA	3,83 M ²
04. KUPATILO	4,06 M ²
05. SPAVAĆA SOBA	11,11 M ²
06. TERASA	4,12 M ²

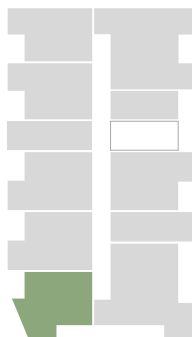
PRIZEMLJE



1. SPRAT



2. SPRAT

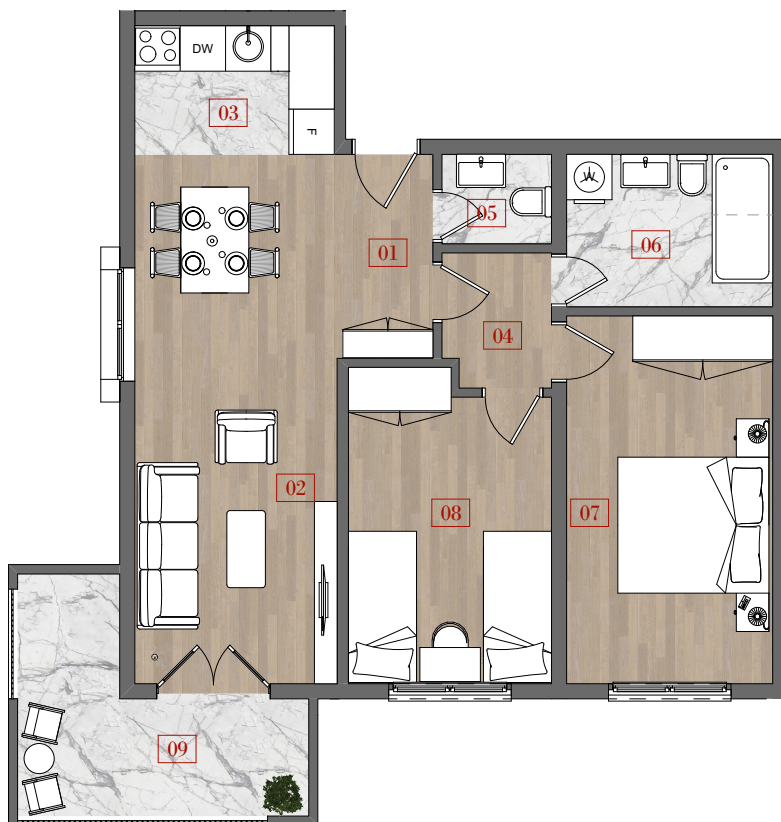


TAVAN



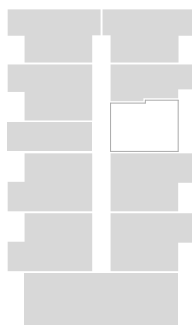
STAMBENA JEDINICA^(1-D1, 2-D1)

Dvosoban stan ___ 68,50 m²

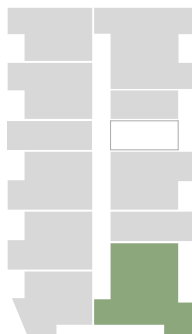


01. HODNIK	3,42 M ²
02. DNEVNA SOBA I TRPEZARIJA	18,99 M ²
03. KUHINJA	4,22 M ²
04. DEGAŽMAN	2,50 M ²
05. TOALET	1,71 M ²
06. KUPATILO	5,50 M ²
07. SPAVAČA SOBA	13,25 M ²
08. SPAVAČA SOBA	10,70 M ²
09. TERASA	8,20 M ²

PRIZEMLJE



1. SPRAT



2. SPRAT

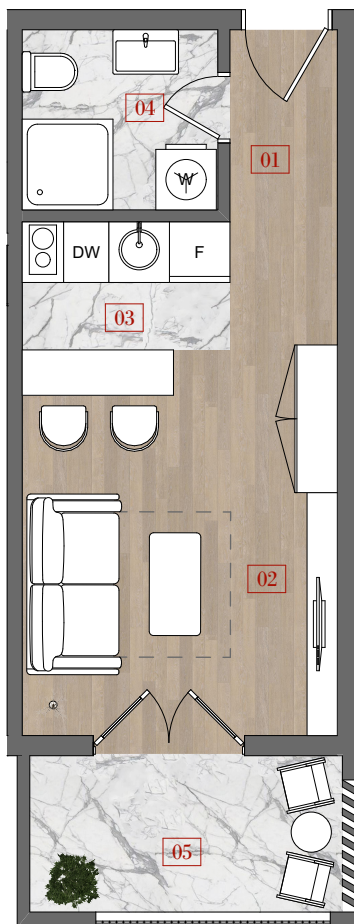


TAVAN



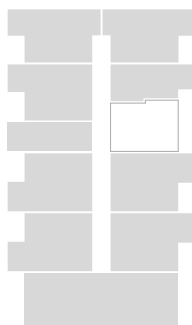
STAMBENA JEDINICA^(1-G1, 2-G1)

Garsonjera ___ 26,20 m²

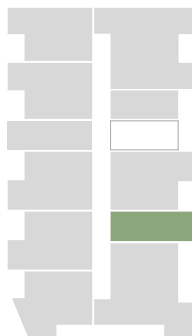


01. HODNIK	2,03 M ²
02. DNEVNA SOBA I TRPEZARIJA	13,90 M ²
03. KUHINJA	2,02 M ²
04. KUPATILO	3,46 M ²
05. TERASA	4,81 M ²

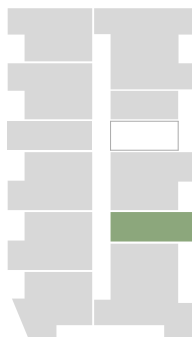
PRIZEMLJE



1. SPRAT



2. SPRAT

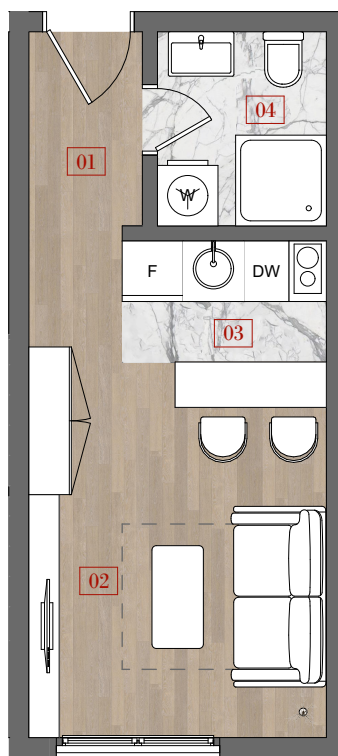


TAVAN



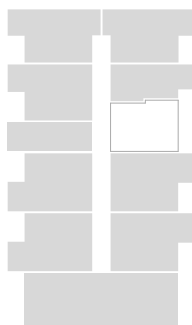
STAMBENA JEDINICA_(1-G3, 2-G3)

Garsonjera ___ 21,10 m²

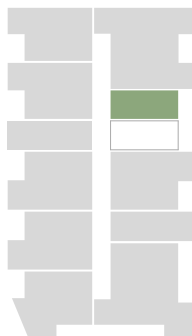


01. HODNIK	3,33 m ²
02. DNEVNA SOBA I TRPEZARIJA	12,51 m ²
03. KUHINJA	2,04 m ²
04. KUPATILO	3,22 m ²

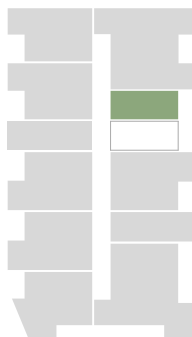
PRIZEMLJE



1. SPRAT



2. SPRAT

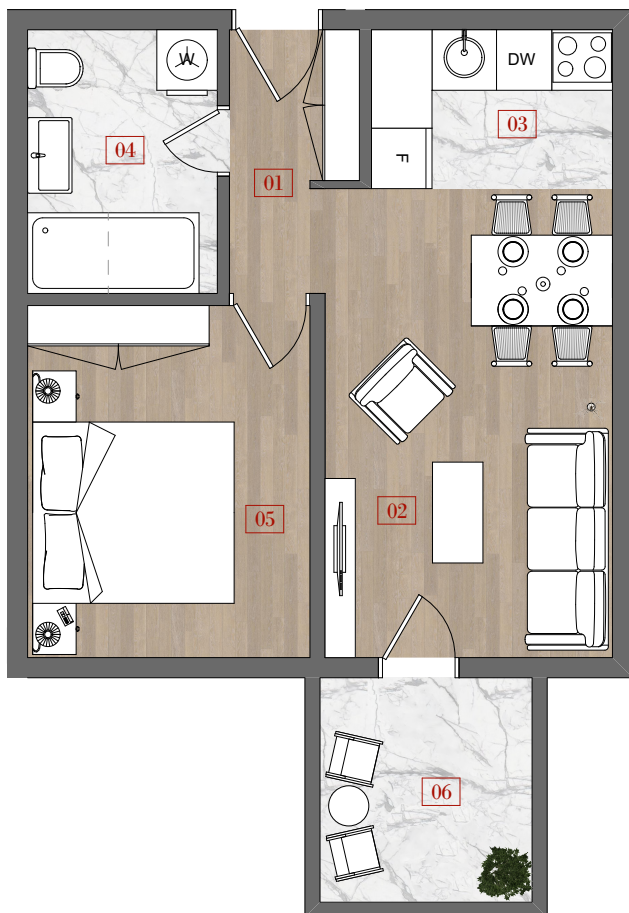


TAVAN



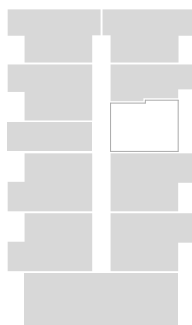
STAMBENA JEDINICA_(T-J1)

Jednosoban stan ___ 39,20 m²

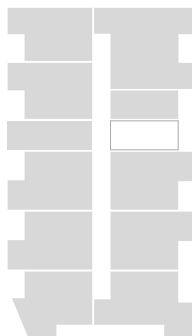


01. HODNIK	2,82 M ²
02. DNEVNA SOBA I TRPEZARIJA	13,26 M ²
03. KUHINJA	3,76 M ²
04. KUPATILO	4,92 M ²
05. SPAVAĆA SOBA	9,78 M ²
06. TERASA	4,68 M ²

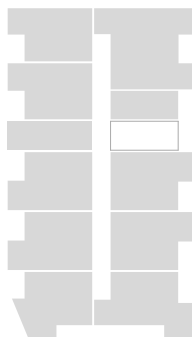
PRIZEMLJE



1. SPRAT



2. SPRAT

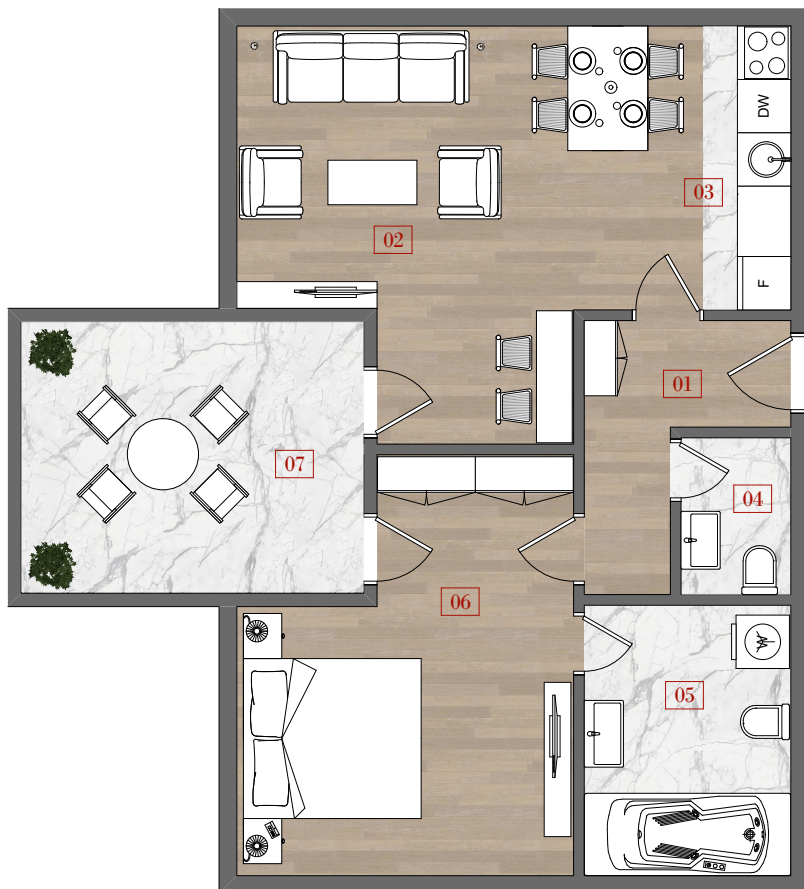


TAVAN



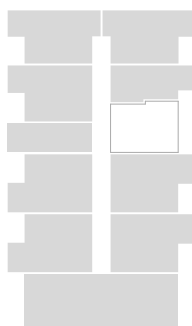
STAMBENA JEDINICA (T-J3)

Jednosoban stan ___ 63,90 m²

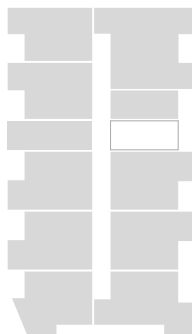


01. HODNIK	4,60 M ²
02. DNEVNA SOBA I TRPEZARIJA	19,37 M ²
03. KUHINJA	3,79 M ²
04. TOALET	2,17 M ²
05. KUPATILO	7,06 M ²
06. SPAVAČA SOBA	15,22 M ²
07. TERASA	11,75 M ²

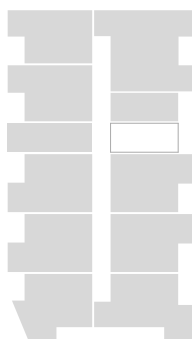
PRIZEMLJE



1. SPRAT



2. SPRAT

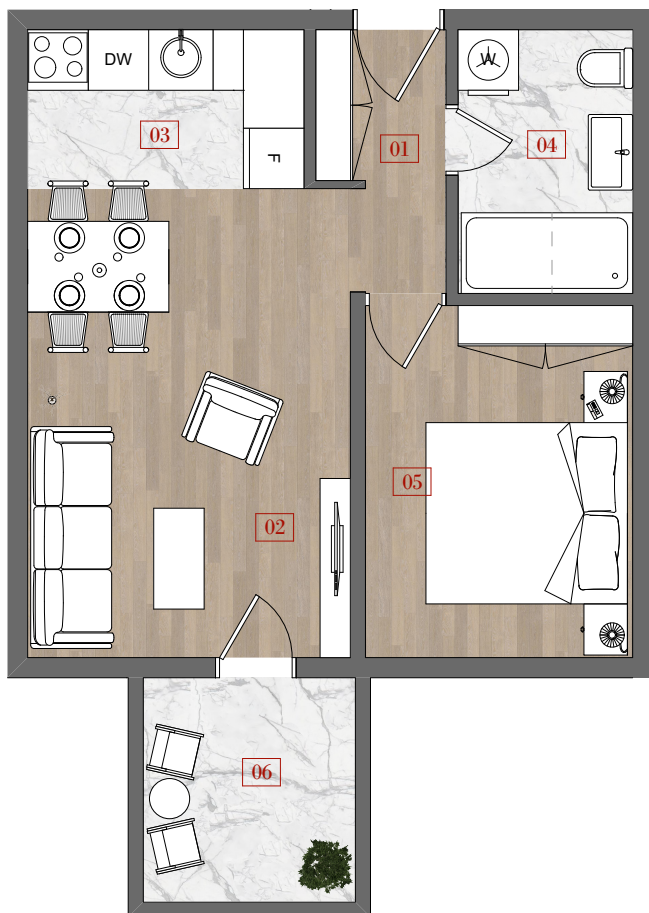


TAVAN



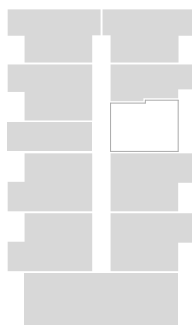
STAMBENA JEDINICA (T-J2)

Jednosoban stan ___ 40,50 m²

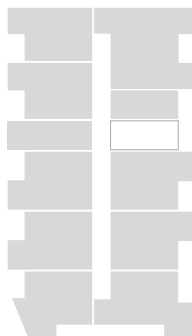


01. HODNIK	2,81 M ²
02. DNEVNA SOBA I TRPEZARIJA	14,88 M ²
03. KUHINJA	4,32 M ²
04. KUPATILO	4,53 M ²
05. SPAVAĆA SOBA	9,25 M ²
06. TERASA	4,68 M ²

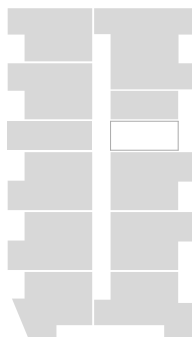
PRIZEMLJE



1. SPRAT



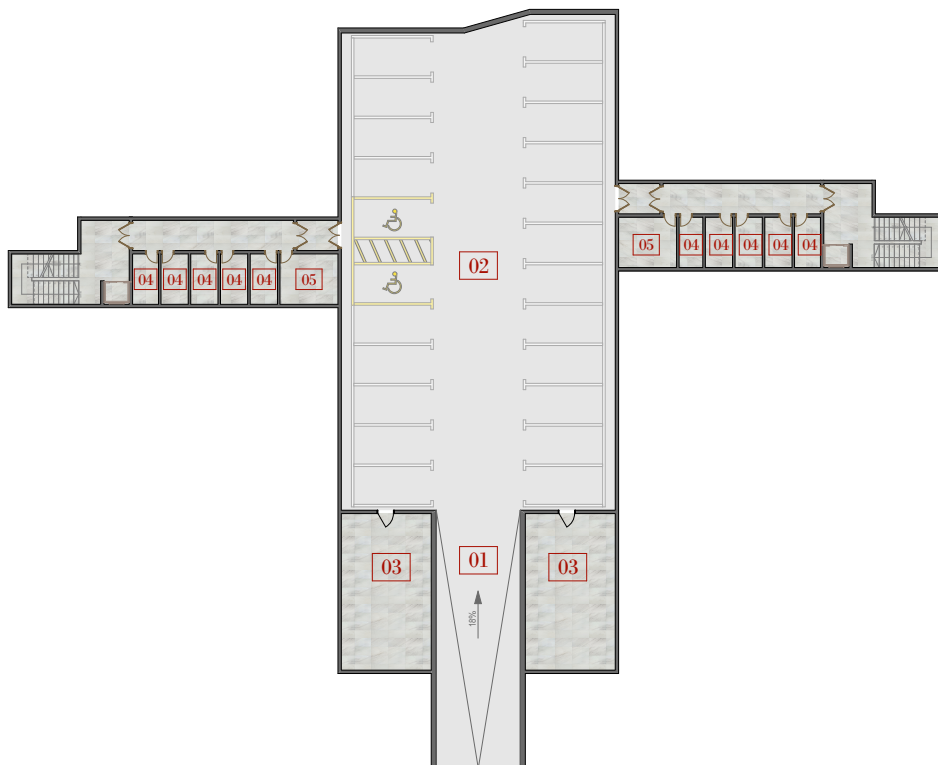
2. SPRAT



TAVAN



PODZEMNA GARAŽA



01. RAMPA

02. PARKING

03. TEHNIČKE PROSTORIJE

04. OSTAVA

05. OSTAVA

P = 23

4,86 M²

10,34 M²

GARDEN COMPLEX

VS INVEST

PODGORICA, CRNA GORA

+ 382 20 875 280

INFO@VSINVEST.ME

WWW.VSINVEST.ME